

PRODUCT CATALOGUE

DISTRIBUTION 分销产品手册

Banli Hardware Sdn Bhd



Sika® Brushcoat-WP

Cementitious Waterproofing Slurry 水泥基防水灰浆

Uses

Bridge pre-existing static hair-line cracks and waterproofing terraces and balconies, RC gutters, bathroom floors and walls, planter boxes.

Characteristics & Advantages

- Pre-batched components.
- Mixes and applies easily.
- Slurry or trowelable consistency.
- Good adhesion to sound substrates.
- Waterproofs and damp proofs masonry surfaces.

Colour

- Grey

Packaging

- 22.5kg / sets

Kegunaan

Merapatkan jurang rekahan halus statik sedia ada dan mengkalis air di teres dan anjung, longkang konkrit bertetulang, lantai bilik air dan dinding, kotak tanaman,

Ciri-ciri & Kelebihan

- Komponen pra-bungkusan.
- Mudah dicampur dan digunakan.
- Konsistensi larutan pekat licin atau mudah dilepa.
- Lekatan yang baik kepada substrat kukuh.
- Kalis air dan kalis lembap permukaan kerja batu.

Warna

- Kelabu

Pembungkusan

- 22.5kg / set

用途

桥接已存在发丝细裂缝及露台和阳台，排水沟，浴室地板和墙壁，种植箱的防水。

特性

- 预制组份
- 易混合，易使用
- 半液体，易均匀涂抹
- 与基层附着力强
- 为砌石表面防水防潮

颜色

- 灰色

包装

- 22.5公斤 / 组



SikaTop® Seal-107

Cementitious waterproofing slurry and protective coating
水泥基防水灰浆与保护层

Uses

- Interior and exterior waterproofing and damp-proofing of concrete, cementitious rendering, brickwork and blockwork.
- Sealing fine hairline cracks in concrete structures.
- Pore / blowhole filling.

Characteristics & Advantages

- Slurry to trowelable consistency
- Good adhesion to sound, prepared substrates.
- Increased frost and salt resistance.
- Protects against concrete carbonation and water penetration.
- Non-toxic - suitable for contact with drinking water.
- Non corrosive to steel or iron

Colour

- Grey

Packaging

- 25kg / sets

Kegunaan

- Pengkalis air dalaman dan luaran dan pengkalis basah untuk konkrit, lepaan bersimen, kerja batu-bata dan kerja blok
- Menutup rapi rekahan halus dalam struktur konkrit.
- Pengisian liang / lubang udara.

Ciri-ciri & Kelebihan

- Konsistensi larutan pekat licin atau mudah dilepa.
- Lekatan balik pada substrat kukuh yang disediakan.
- Meningkatkan rintangan terhadap fros dan garam.
- Melindungi daripada karbonasi konkrit dan penembusan air.
- Tidak toksik - sesuai untuk kontak dengan air minuman.
- Tidak menghakis pada keluli atau besi.

Warna

- Kelabu

Pembungkusan

- 25kg / set

用途

- 用於混凝土，水泥基刷面，砖墙和砌块墙的迎水及背水面防水。
- 密封混凝土结构中发丝细的裂缝。
- 细孔和气孔的填充。

特性

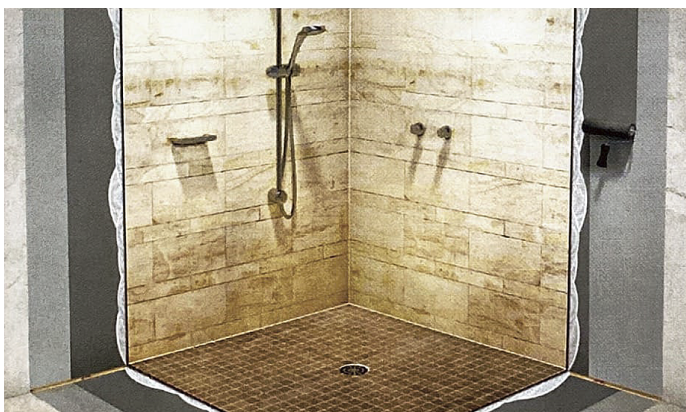
- 半液体，易均匀涂抹。
- 与基层附着力强。
- 增强抗霜冻性和抗盐蚀性。
- 防止混凝土碳化和水的渗透。
- 无毒，可接触饮用水

颜色

- 灰色

包装

- 25公斤 / 组



SikaTop® Seal-109 MY

Polymer-modified, flexible, cementitious waterproofing coating
聚合物改性弹性水泥基防水涂料

Uses

Waterproofing, sealing of hairline cracks and as a protective coating against aggressive elements such as carbon dioxide (for example, in concrete repair work), frost and de-icing agents

Characteristics & Advantages

- Good crack bridging capability.
- Good adhesion to sound substrates
- Impermeable
- Increased frost and salt resistance.
- Decreases carbon dioxide penetration.
- Non-toxic, same as cement
- Flexible

Colour

- Grey

Packaging

- 36kg / sets

Kegunaan

Pengkalis air, penutupan rapi rekahan halus dan sebagai satu lapisan perlindungan terhadap elemen-elemen agresif seperti karbon dioksida (sebagai contoh, dalam kerja pembaikpulihan konkrit), agen penyah-fros dan penyah-ais.

Ciri-ciri & Kelebihan

- Kebolehan merapatkan jurang rekahan yang baik.
- Lekatan yang baik pada substrat kukuh
- Tak telap
- Meningkatkan rintangan terhadap fros dan garam.
- Mengurangkan penembusan karbon dioksida.
- Tidak toksik, sama seperti simen.
- Fleksibel.

Warna

- Kelabu

Pembungkusan

- 36kg / set

用途

防水，可密封发丝细的裂缝，也可以作为腐蚀元素如二氧化碳的保护涂层 (如混凝土补修工程)，防霜，防冻盐。

特性

- 良好的裂缝桥接性能
- 与基层附着力强
- 不透水，抗渗透
- 增强抗霜冻性和抗盐蚀性
- 降低二氧化碳的渗透
- 无毒，与水泥相似
- 有弹性

颜色

- 灰色

包装

- 36公斤 / 组



Sikalastic®-1 KMY

One-component, fibre reinforced, flexible cementitious waterproofing compound
单组分纤维强化弹性水泥基防水化合物

Uses

- Waterproof protection of concrete structures.
- Waterproofing external wall surfaces to be backfilled in the ground.
- Internal waterproofing in basement.
- Waterproofing of terraces and balconies.

Characteristics & Advantages

- Easy to apply by brush, roller or trowel.
- Can be applied on damp substrate.
- Good sag resistance and easy to apply on vertical surfaces.
- Flexible crack-bridging properties.
- Very good adhesion to most common substrates.
- Mixing ratio can be adjusted in order to obtain consistency and work ability.

Colour

- Grey

Packaging

- 2 x 6kg pail

Kegunaan

- Perlindungan kalis air untuk struktur konkrit.
- Mengkalis air pada permukaan dinding luaran untuk pengisian di dalam tanah.
- Pengkalis air dalaman di besmen.
- Pengkalis air di teres dan anjung.

Ciri-ciri & Kelebihan

- Mudah untuk digunakan dengan berus, roller atau sekop.
- Boleh digunapakai pada substrat basah.
- Rintangan melondeh yang baik dan mudah untuk digunakan pada permukaan menegak.
- Ciri-ciri merapatkan jurang rekahan yang fleksibel.
- Lekatan yang amat baik pada kebanyakan sustrat biasa.
- Nisbah campuran boleh dilaraskan demi untuk mendapatkan konsistensi dan keboleherjaan.

Warna

- Kelabu

Pembungkusan

- 2 x 6kg / baldi

用途

- 混凝土结构的防水保护
- 地面回填外墙表面防水
- 在地下室的内部防水
- 露台和阳台的防水

特性

- 简易施工，可用刷子，滚筒或抹刀
- 可在潮湿的基材上使用
- 放流挂，容易在垂直表面施工
- 弹性裂缝桥接功能
- 对一般常用的基材有很好的附着力
- 混合比例可调整以达到一致性和可加工性。

颜色

- 灰色

包装

- 2 x 6公斤 / 桶



Sika® Fastplug-102

Ultra fast-setting compound for stopping water leaks.
速凝止水合成物

Uses

To stop water leaks and seepage through rock and concrete, as well as through joints between concrete and steel (both surroundings, ducts, sheet piles, etc.) in subways, culverts, tunnels, dams, basements, pools, etc.

Characteristics & Advantages

- Fast setting & strength development.
- Permanent
- Good adhesion
- Excellent water-stopping power and hydraulic resistance
- No cracking
- Will not cause corrosion to steel bars
- Non-toxic after hardening

Colour

- Grey

Packaging

- 5 kg / pail

Kegunaan

Untuk menghentikan kebocoran dan ketirisan air melalui batu dan konkrit, dan juga melalui sambungan antara konkrit dan keluli (sekitar bolt, saluran, kepingan peenahan dan sebagainya) dalam laluan bawah tanah, pementang, terowong, empangan, besmen, kolam dan sebagainya

Ciri-ciri & Kelebihan

- Cepat bentuk & pembangunan kekuatan.
- Kekal
- Lekatan yang baik
- Kuasa penahan-air dan rintangan hidraulik yang bagus.
- Tidak merekah
- Tidak akan menyebabkan hakisan pada batang keluli.
- Tidak bertoksik selepas pengerasan

Warna

- Kelabu

Pembungkusan

- 5 kg / baldi

用途

用于阻止地下铁路，涵洞，隧道，水坝，地下室，水池等混凝土与岩石或钢铁结合处的压力渗漏。

特性

- 快速凝固，强度增长快
- 永久止水
- 良好粘结性
- 优秀的止水力与抗水压性能
- 不会产生裂缝
- 不腐蚀钢筋
- 固化后无毒

颜色

- 灰色

包装

- 5公斤 / 桶



Sikagard®-703 GroutSeal

Water Repellent Impregnation for tiles joints and building surface.
瓷磚填縫和建築物立面防水浸迹剂

Uses

For making tiles joints / building surfaces water repellent and protecting against water ingress.

Characteristics & Advantages

- Penetrate deeply into tiles joints / building surface to provide water resistance properties.
- Product in aqueous phase with strong water repellent capability.
- Treatment is usually invisible not changing the substrate aspect.
- Improve resistant to dirt pick up and reduces fungal and algal growth.
- Can be over coated with suitable paints and coatings.
- Water based environmental friendly
- Ready to use
- Easy application by low-pressure spray gun, brush and roller

Colour

- *Whitish liquid*

Packaging

- 500ml / bottle
- 1 litre / bottle

Kegunaan

Untuk sambungan jubin / permukaan bangunan menangkis air dan melindungi daripada kemasukan air.

Ciri-ciri & Kelebihan

- Meresap jauh ke dalam sambungan jubin / permukaan bangunan untuk memberikan sifat kalis air.
- Produk dalam bentuk cair dengan keupayaan kalis air yang tinggi.
- Rawatan biasanya tidak kelihatan tanpa mengubah aspek permukaan asal.
- Meningkatkan kalis kotoran dan mengurangkan pertumbuhan kulat dan alga.
- Boleh dilipasi dengan cat dan salutan yang sesuai.
- Berasaskan air yang mesra persekitaran
- Sedia untuk digunakan
- Aplikasi mudah dengan penyembur tekanan rendah, berus dan roller.

Warna

- *Cecair keputihan*

Pembungkusan

- 500 ml / botol
- 1 litre /botol

用途

適用於瓷磚填縫或建築物立面防水浸迹剂和防止水进入

特性

- 作为建筑物立面和瓷磚填縫的防水剂，防止渗入
- 斥水性强
- 处理层通常是透明的，一般不会改变基层外观
- 改变立面抗沾污能力，减少霉菌类及苔藓类的生长
- 可涂覆相匹配的涂料
- 即用型
- 简易施工，使用常规低压喷雾，刷子或滚筒

颜色

- 白色液体

包装

- 500毫升 / 罐
- 1公升 / 罐



Sika® Igoflex® R

Flexible rubber / bitumen emulsion coating
弹性橡胶 / 沥青乳胶漆

Uses

Used as a flexible external protective coating and vapour barrier for retaining walls, basements, settlement tanks.

Characteristics & Advantages

- Suitable for dry and damp surfaces.
- Ready-to-use, no mixing or heating.
- Non-sag on vertical surfaces.
- Good weather resistance and ageing properties.
- Bridges shrinkage and hair-line cracks.
- Flexible, permanently plasto-elastic, even at low temperatures.
- Odourless and fungus resistant.
- Good resistance to soil acids and salts

Colour

- *Black*

Packaging

- 20 kg / pail

Kegunaan

Digunakan sebagai lapisan perlindungan luaran yang fleksibel dan penghadang wap untuk dinding penahan, besmen, tangki enapan

Ciri-ciri & Kelebihan

- Sesuai untuk permukaan kering dan lembap.
- Sedia untuk digunakan, tidak perlu dicampur atau dipanaskan.
- Tidak melondeg pada permukaan menegak.
- Rintangan terhadap cuaca dan ciri-ciri penuaan yang baik.
- Merapatkan jurang pengecutan dan rekahan halus.
- Fleksibel, kekal plasto-elastik, walaupun pada suhu rendah.
- Tidak berbau dan kalis kulit.
- Rintangan yang baik terhadap asid dan garam tanah.

Warna

- *Hitam*

Pembungkusan

- 20 kg / baldi

用途

用作挡土墙、地下室、沉淀池的弹性外部保护层及防潮层

特性

- 适用于干燥和潮湿的表面
- 即用，无需混合或加热
- 不留挂
- 耐候几耐老化
- 桥接收缩和发线裂缝
- 即使在低温下也能保持永久弹性
- 无臭及抗真菌
- 能抵抗土壤中的酸性及盐分

颜色

- 黑色

包装

- 20 公斤 / 桶



Sikagard®- 905 WID

Ready-to-use, water-based, damp-proofing, and hardening impregnation for salpetre and humidity treatment

即用型，水性质，防潮与硬化浸渍，用於湿度潮气治疗

Uses

Used to prevent damp in plastered or rendered surfaces, brick or stone. Due to its low viscosity, it penetrates deeply into the substrate and forms an invisible water damp-proof barrier.

- Saltpetre treatment
- Prevention of mould growth by reducing the water absorption.
- Damp-proofing and surface hardening

Colour

- *Colourless Liquid*

Size:

- 900 ml x 6 (tray)



Characteristics & Advantages

- Very low viscosity
- Almost invisible after drying.
- Can be over-coated with paint or wall paper.
- Can be used internally and externally
- Does not contain any biocide or any algaecide raw material.
- UV resistant



Sika Antisol® A

Water-dispersed, acrylic copolymer based concrete curing compound
混凝土固化剂

Uses

Sika® Antisol® A is sprayed onto newly placed concrete surfaces to form a thin film barrier against premature water loss, without disturbing the normal setting action. Sika® Antisol® A is suitable where subsequent surface treatments such as screed, protective coating, decorative paint, etc. are required.

Colour

- Milky White liquid

Size:

- 20 L pail
- 200 L drum

Characteristics & Advantages

Sika Antisol-A provides the following beneficial properties to concrete surfaces:

- Reduces incidence of plastic cracking.
- Reduces shrinkage.
- Reduces dusting.
- Increases frost resistance.
- Replaces labor intensive curing methods such as wet-Hessian, watering, etc.
- Can be overcoated without affecting the bonding of the subsequent application (concrete surfaces to be washed prior to overcoating in accordance with normal practice)
- Will not re-emulsify in contact with water therefore allows overcoating even where back pressure of water is expected
- Keeps water out of car parks, tunnels, basements, warehouses, cellars, etc.



Sika Waterbar®

PVC joint waterstop
热塑性塑料 止水带

Uses

Can be used against water pressure.

- Can be used for waterproofing of reservoirs, water towers, dams, sewage treatment plants, channels, culverts, bridges, swimming pools, wet rooms, etc.
- Keeps water out of car parks, tunnels, basements, warehouses, cellars, etc.

Colour

- *Yellow*

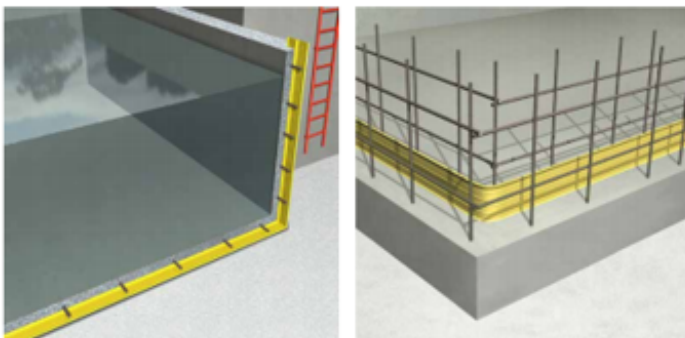
Size:

- V-15, V-20, V-25 (**30m**)

Construction Joint:



V Type
15/20/25 cm



Characteristics & Advantages

- Useable for high water pressure
- Flexible
- Easy to use, weldable
- Permanently resistant to seawater, sewage, road salt solutions.



Sika® SealTape F

Crack-bridging Waterproof Sealing Tape
防水裂纹桥接带

Uses

Crack-bridging and waterproofing tape used in combination with Sika® waterproofing products for reducing the risk of leakage at locations at risk to cracking for:

- Wall corners.
- Floor-to-wall connections.
- Residential or commercial wet rooms.
- Cold storage areas, car washes and catering kitchens.
- Swimming pools and water retaining structures in combination with ceramic coverings.
- Pipe entries
- Balconies and terraces.
- Interior and exterior use.

Colour

- Yellow

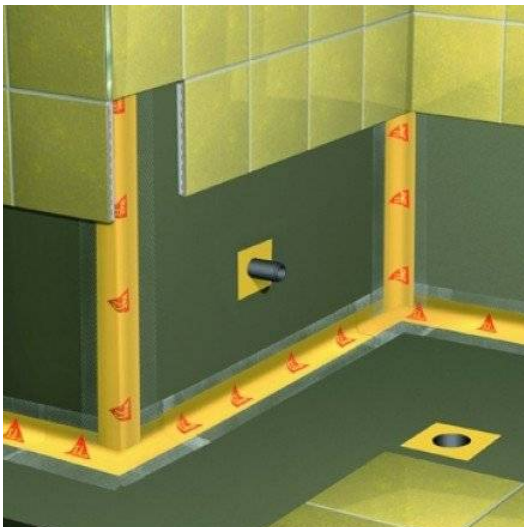
Characteristics & Advantages

- High elasticity
- High breaking strength
- Easy to install
- Waterproof and watertight
- Good adhesion to Sika® waterproofing products.
- Chemical resistant
- Resistant to UV exposure

Size:

- 50m(L) x 120mm(W)

** Thickness: ~0.66 mm



SikaBit® W-15

Wet-applied, modified bitumen waterproofing membrane
湿铺，改性沥青防水卷材

Uses

Designed for non-exposed waterproofing application such as:

- Foundations
- Basements slabs and walls
- Podium slabs

Characteristics & Advantages

- Safe, easy and fast application
- No need for special equipment
- Direct application on wet substrate
- Excellent initial and long term adhesion
- Full surface bonding
- Zero water underflow
- Crack-bridging ability
- High tear resistance
- High puncture resistance
- Resistant to chemical corrosion

Colour

- *Black*

Packaging

- 1 x 20m / roll

Kegunaan

Direka untuk aplikasi pengkalis air tidak teredah seperti:

- Asas tapak
- Lantai besmen dan dinding
- Lantai podium

Ciri-ciri & Kelebihan

- Pemasangan selamat, mudah dan pantas.
- Tidak perlu peralatan khas
- Aplikasi terus pada substrat basah
- Lekatan awal dan jangka panjang yang amat bagus.
- Pengikatan permukaan penuh.
- Aliran air bawahan sifar.
- Kebolehan merapatkan jurang-retak.
- Rintangan kehausan tinggi.
- Rintangan kebocoran tinggi.
- Kalis kepada hakisan bahan kimia.

Warna

- *Hitam*

Pembungkusan

- 1 x 20m / Gulung

用途

用于非暴露防水应用如:

- 地基
- 地下室底板和墙面
- 平台底板

特性

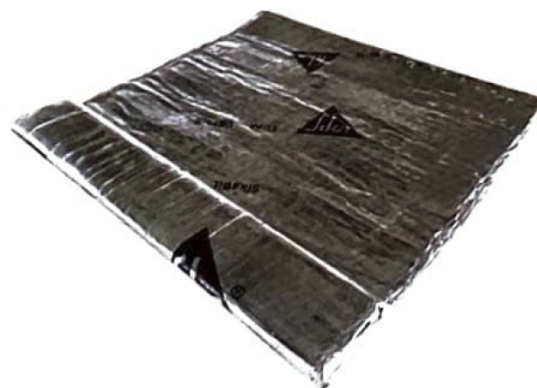
- 安全，简易和快速安装
- 无需特殊器材
- 在湿基面施工
- 初期和长久的粘着力
- 全面粘结
- 零潜流
- 裂缝桥接能力
- 高抗撕裂性
- 高抗穿刺性
- 耐化学腐蚀

颜色

- 黑色

包装

- 1 x 20米/ 卷



SikaSwell® S-2

Polyurethane hydrophilic swellable sealant
聚氨酯遇水膨胀密封胶

Uses

Sealing:

- Construction joints
- Pipe and steel work penetrations through walls and floor slabs.
- Around all types of penetrations and construction joints.
- Construction joints in cable ducts, etc

Characteristics & Advantages

- Easy to apply
- Good adhesion to various substrates
- Optimised expansion rate, therefore no damage to fresh concrete during curing.
- Highly economical
- Swells in contact with water.
- Permanently water resistant
- Adaptable to fit many different types of detailing.

Colour

- *Oxide red*

Packaging

- 600ml / Unipacks

Kegunaan

Mengedap:

- Sambungan binaan
- Penembusan kerja paip dan keluli melalui dinding dan papak lantai.
- Sekitar semua jenis penembusan dan sambungan binaan.
- Sambungan binaan dalam saluran kabel, dsb.

Ciri-ciri & Kelebihan

- Mudah digunakan.
- Lekatan yang baik ke pelbagai substrat.
- Kadar pengembangan yang dioptimumkan, oleh itu tiada kerosakan kepada konkrit baru semasa pengawetan konkrit.
- Sangat menjimatkan.
- Mengembang jika bersentuhan dengan air.
- Tahan air secara kekal.
- Boleh disesuaikan agar sesuai dengan pelbagai jenis perincian

Warna

- *Oksida Merah*

Pembungkusan

- 600ml / Unipac

用途

密封:

- 施工缝
- 贯穿墙壁和楼板的管道和钢筋
- 所有类型的贯穿和施工缝的周围
- 电缆管道等的施工缝

特性

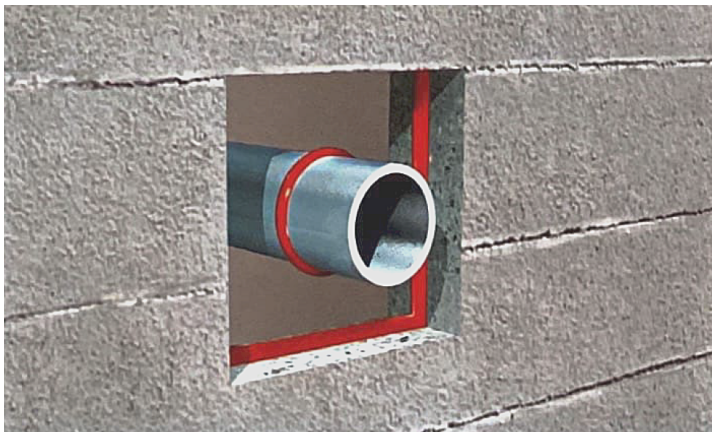
- 容易使用
- 对各种基材有良好的粘着力
- 优化膨胀率, 因此在新拌混凝土固化过程中不会损坏混凝土
- 非常经济
- 接触水会膨胀
- 持久防水
- 适应多种不同类型的细节设计

颜色

- 氧化红

包装

- 600毫升 / 支



SikaCoat® -300 Cool

Elastic waterproofing covering for roofing
屋顶弹性防水覆盖层

Uses

Waterproofing coating for exposed roof

- Concrete
- Roof tiles
- Brickwork
- Fiber cement board
- Metal

Characteristics & Advantages

- Non-toxic product
- Non-flammable, non hazardous.
- Environmentally friendly product.
- Ease of application by brush or roller
- Good adhesion to most prepared substrates.
- Seamless and high elasticity.
- Excellent UV and weather resistance.
- Energy efficiency and high solar reflective cool roof coating.

Colour

- Concrete grey
- Reflective white

Packaging

- 4 kg / pail
- 20 kg / pail

Kegunaan

Lapisan pengkalis air untuk bumbung terdedah

- Konkrit
- Jubin bumbung
- Batu-bata
- Papan simen fiber
- Logam

Ciri-ciri & Kelebihan

- Produk bukan-toksik.
- Tidak boleh terbakar, tidak membahaya
- Produk mesra alam
- Aplikasi mudah dengan berus dan roller
- Lekatan baik kepada kebanyakan substrat yang disediakan.
- Lancar dan berkeelastikan tinggi
- Rintangan UV dan cuaca yang amat bagus.
- Lapisan bumbung sejuk yang cekap tenaga dan reflektif solar yang tinggi.

Warna

- Kelabu konkrit
- Putih bersinar

Pembungkusan

- 4 kg / baldi
- 20 kg / baldi

用途

暴露式屋顶的防水涂料如：

- 混凝土
- 地砖屋顶
- 砖石
- 纤维水泥板
- 金属

特性

- 无毒产品
- 不易燃，无害
- 绿色环保产品
- 简易施工，可用刷子和滚筒
- 对各种处理过的基层有良好粘结性
- 无缝 - 高弹性的防水涂料
- 优异的抗紫外线和耐候
- 高效节能和高反射型冷屋顶涂料

颜色

- 混凝土灰色
- 白色

包装

- 4 公斤 / 桶
- 20 公斤 / 桶



SikaCoat® -500 Super

Styrene-acrylic copolymer waterproof liquid membrane coating with internally reinforced micro-fibres

内部微纤维强化苯乙丙烯酸共聚物防水液膜涂料

Uses

Waterproofing coating for exposed roof and ideal for roof refurbishment project.

- Concrete
- Roof tiles
- Brickwork
- Fiber cement board
- Metal

Characteristics & Advantages

- Internally reinforced with micro-fibres
- Enhanced tensile strength thus provides tough and trafficable cured coating.
- Excellent crack bridging properties for refurbishment roof.
- Non-toxic product
- Non-flammable, non-hazardous.
- Environmentally friendly product.
- Ease of application by brush and roller.
- Good adhesion to most prepared substrates.
- Seamless and high elasticity
- Excellent UV and weather resistance.
- Energy efficiency and high solar reflective cool roof coating.

Colour

- Concrete grey
- Reflective white

Packaging

- 5 kg / Pail
- 20 kg / pail

Kegunaan

Lapisan pengkalis air untuk bumbung terdedah dan ideal untuk projek membaik pulih bumbung:

- Konkrit
- Jubin bumbung
- Batu-bata
- Papan simen fiber
- Logam

Ciri-ciri & Kelebihan

- Diperbuat secara dalaman dengan fiber mikro.
- Kekuatan tegangan yang dipertingkatkan dengan itu menyediakan lapisan terawat yang kukuh dan boleh dilayari.
- Sifat-sifat merapatkan jurang-retak yang amat bagus untuk pembaik pulihan bumbung.
- Produk bukan-toksik.
- Tidak boleh terbakar, tidak membahaya
- Produk mesra alam
- Aplikasi mudah dengan berus dan roller
- Lekatan baik kepada kebanyakan substrat yang disediakan.
- Lancar dan berrkeelastikan tinggi
- Rintangan UV dan cuaca yang amat bagus.
- Lapisan bumbung sejuk yang cekap tenaga dan reflektif solar yang tinggi.

Warna

- Kelabu konkrit
- Putih bersinar

Pembungkusan

- 5 kg / baldi
- 20 kg / baldi

用途

适用于暴露式屋顶和屋顶翻新项目的防水涂料如：

- 混凝土
- 地砖屋顶
- 砖石
- 纤维水泥板
- 金属

特性

- 内部微纤维强化
- 增强拉伸强度从而提供强韧和可供人通行的固化涂料
- 良好的裂缝桥接性能，可用于屋顶翻新
- 无毒产品
- 不易燃，无害
- 绿色环保产品
- 简易施工，可用刷子和滚筒
- 对各种处理过的基层有良好粘结性
- 无缝 - 高弹性的防水涂料
- 优异的抗紫外线和耐候
- 高效节能和高反射型冷屋顶涂料

颜色

- 混凝土灰色
- 白色

包装

- 5 公斤 / 桶
- 20 公斤 / 桶



Sikalastic® -110

High elasticity, 1-part polyurethane bituminous waterproofing coating
高弹性单组分沥青聚氨酯防水涂料

Uses

- Can be applied on different structures including those subject to thermal movement and vibration, such as concealed RC flat roof.
- Waterproofing coating under tiles areas like podium, bathrooms and balconies.

Characteristics & Advantages

- Easy application by roller, brush or sprayed, even onto vertical walls and ceiling.
- High elasticity
- High crack bridging capability
- Optimum adhesion onto concrete
- Can be applied directly on damp surface.
- Non-toxic

Colour

- *Black*

Packaging

- 20 kg / pail

Kegunaan

- Boleh digunakan pada struktur berlainan termasuk yang menjadi subjek kepada pergerakan termal dan gataran, seperti bumbung rata RC yang terlindung.
- Lapisan pengkalis air di bawah kawasan berjubin seperti podium, bilik air dan anjung.

Ciri-ciri & Kelebihan

- Aplikasi mudah oleh roller, berus atau semburan, malah pada dinding menegak dan siling.
- Keelastikan tinggi
- Kebolehan menjembatani rekahan yang tinggi.
- Lekatan optimum ke atas konkrit
- Boleh digunakan secara langsung ke atas permukaan basah.
- Tidak toksik.

Warna

- *Hitam*

Pembungkusan

- 20 kg / baldi

用途

- 可用于受到热位移和振动影的各种结构，如隐蔽钢筋混凝土平面屋顶
- 用于瓷砖区下的防水涂料，如平台、浴室和阳台

特性

- 可用滚筒、刷子或喷射施工垂直的墙壁和天花板
- 高弹性
- 高裂缝桥接能力
- 最优粘结混凝土性能
- 可直接在潮湿表面使用
- 无毒

颜色

- 黑色

包装

- 20 公斤 / 桶



SikaBit® PRO P-30-0 Sand (Concealed / 压铺)

Atactic poly propylene (app) modified bitumen-based waterproofing membrane with non-woven polyester felt reinforcement with sand broadcast

砂覆面, 无纺聚氨毡, 无规聚丙烯改性基沥青防水卷材

Uses

Used as waterproofing membrane for protection of various substrates in wide range of applications.

- Medium to large concealed roof slabs (domestic, commercial and industrial)
- Basements and raft slabs
- Underground car parks, etc.

Characteristics & Advantages

- Can be handled in warm temperatures easily.
- Minimum water absorption
- Easy to install by torching method
- Long term flexibility
- Excellent water tightness
- High tensile strength; tear and puncture resistant
- Capable of withstanding thermal and structural stresses.
- Highly durable; excellent under long term aging.

Colour

- *Black*

Packaging

- 1m x 10m / roll

Kegunaan

Digunakan sebagai membran pengkalis air untuk perlindungan pelbagai substrat dalam julat aplikasi yang luas:

- Papak bumbung tertutup saiz sederhana hingga besar (domestik, kemersial dan perindustrian)
- Papak besmen dan asas rakit
- Parkir kereta bawah tanah, dan sebagainya

Ciri-ciri & Kelebihan

- Boleh digunakan dalam suhu panas dengan mudah.
- Penyerapan air yang minimum
- Mudah dipasang melalui kaedah semburan api.
- Fleksibiliti jangka panjang
- Keketatan air yang amat bagus
- Kekuatan tegangan tinggi; rintangan kepada koyakan dan kebocoran.
- Mampu menahan stres termal dan berstruktur.
- Amat tahan lasak; bagus di bawah penuaan jangka panjang.

Warna

- *Hitam*

Pembungkusan

- 1m x 10m / gulung

用途

作为保护各种基材的防水卷材, 可用于各种应用, 如下:

- 中型到大型的压铺屋顶楼板 (民用, 商业和工业)
- 地下室和筏板
- 地下室停车场等

特性

- 可在温暖的气温下简易操作
- 吸水率极低
- 建议火焰加热器施工
- 长期的柔韧性
- 优越的不透水性
- 高抗拉强度; 撕裂和抗穿刺性
- 能够承受高温和结构压力
- 耐用; 优越的抗老化性能

颜色

- 黑色

包装

- 1米 x 10米 / 卷



SikaBit® PRO P-45 G-0 MG (Exposed / 暴露)

Atactic poly propylene (app) modified bitumen-based waterproofing membrane with natural mineral granules finish

天然矿物颗粒覆面，无规聚丙烯改性基沥青防水卷材

Uses

Used as waterproofing / dam proofing membrane for protection of various substrates in wide range of applications.

- Medium to large exposed roof slabs (domestic, commercial and industrial)
- Basements and raft slabs, exposed roofs
- Underground cap parks, etc.
- Bridges & underpass

Characteristics & Advantages

- Can be handled in warm temperatures easily.
- Minimum water absorption
- Easy to install by torching method
- Long term flexibility
- Excellent water tightness
- High tensile strength; tear and puncture resistant
- Capable of withstanding thermal and structural stresses.
- Highly durable; excellent under long term aging.

Colour

- Black

Packaging

- 1m x 10m / roll

Kegunaan

Digunakan sebagai membran pengkalis air / kelembapan untuk perlindungan pelbagai substrat dalam julat aplikasi yang besar:

- Papak bumbung terdedah saiz sederhana hingga besar (domestik, kemersial dan perindustrian)
- Papak besmen dan asas rakit, bumbung terdedah
- Tempat letak kereta bawah tanah dan sebagainya
- Jambatan & laluan bawah tanah

Ciri-ciri & Kelebihan

- Boleh digunakan dalam suhu panas dengan mudah.
- Penyerapan air yang minimum
- Mudah dipasang melalui kaedah semburan api.
- Fleksibiliti jangka panjang
- Keketatan air yang amat bagus
- Kekuatan tegangan tinggi; rintangan kepada koyakan dan kebocoran.
- Mampu menahan stres termal dan berstruktur.
- Amat tahan lasak; bagus di bawah penuaan jangka panjang.

Warna

- Hitam

Pembungkusan

- 1m x 10m / gulung

用途

在广泛的应用中保护各种基材的防水或防潮卷材:

- 中型到大型的暴露屋顶楼板 (民用, 商业和工业)
- 地下室, 筏板和暴露式屋顶
- 地下室停车场等
- 桥梁和地下通道

特性

- 可在温暖的气温下简易操作
- 吸水率极低
- 建议火焰加热器施工
- 长期的柔韧性
- 优越的不透水性
- 高抗拉强度; 撕裂和抗穿刺性
- 能够承受高温和结构压力
- 耐用; 优越的抗老化性能

颜色

- 黑色

包装

- 1米 x 10米 / 卷



SikaLatex® -118

Water-resistant polymer bonding agent and mortar-strengthening additive
防水聚合物粘结兼砂浆强化剂

Uses

For substantially increases the qualities of cement mortars such as thin layer patching mortars, renders, floor screeds, concrete repair mortars, abrasion resistant linings, tile fixing mortars, masonry mortars

Characteristics & Advantages

- Extremely good adhesion
- Reduced shrinkage
- Excellent water resistance
- Increased abrasion resistance
- Improved chemical resistance
- Non-corrosive
- Ready-to-use

Colour

- *Milky White*

Packaging

- 4 litre / pail
- 18 litre / pail

Kegunaan

Untuk meningkatkan kualiti mortar simen seperti mortar tampalan berlapis nipis, lepaan, lepaan lantai kasar, mortar baikpulih konkrit, pelapisan kalis lelasan, mortar pembaikpulihan jubin, mortar kerja batuan

Ciri-ciri & Kelebihan

- Lekatan yang amat baik
- Pengurangan pengecutan
- Ritangan air yang hebat.
- Peningkatan rintangan lelasan
- Penambahbaikan rintangan kimia.
- Tidak menghakis
- Sedia untuk digunakan.

Warna

- *Putih susu*

Pembungkusan

- 4 liter / baldi
- 18 liter / baldi

用途

大幅度提升水泥砂浆的品质，例如薄层修补砂浆、抹灰、地面砂浆、混凝土修补砂浆、耐磨衬层、砌筑砂浆

特性

- 非常良好的附着力
- 减低收缩性
- 良好的防水性
- 强化耐磨性
- 改善耐化学性
- 非腐蚀性
- 即用

颜色

- 乳白色

包装

- 4 公升 / 桶
- 18 公升 / 桶



SikaLatex®-88

Water-resistant polymer bonding agent and mortar improver

an acrylate based polymer emulsion for adding to cement mortars, where good adhesion and water resistance are required.

防水聚合物粘结兼砂浆强化剂

Uses

A high quality emulsion that substantially increases the qualities of cement mortars such as:

- Thin layer patching mortars
- Renders
- Floor screeds
- Tile fixing mortars
- Masonry mortars

Colour

- *Milky white liquid*

Characteristics & Advantages

- Good adhesion
- Good water resistance
- Non-corrosive
- Ready for use

Size:

- 4L , 20L

SikaGrout® -215

Pumpable shrinkage compensated cementitious grout
可泵送收缩补偿水泥灌浆

Uses

Suitable for repairs to the following concrete structures:

- Machine foundations
- Columns in precast construction
- Concrete anchors
- Bridge bearings
- Cavities
- Gaps
- Recesses

Characteristics & Advantages

- Easy to mix and apply
- Good flow consistency
- Rapid strength development
- Non-corrosive
- Non-toxic
- Iron and chloride free
- Shrinkage-compensated
- Good pumping properties

Colour

- Grey

Packaging

- 25 kg / bag

Kegunaan

Sesuai untuk pembaikpulihan kepada struktur konkrit berikut:

- Tapak mesin
- Kolum dan pembinaan pra-acuan
- Sauh konkrit
- Galas jambatan
- Rongga
- Celah
- Benaman

Ciri-ciri & Kelebihan

- Mudah untuk dicampur dan digunakan
- Konsistensi aliran yang baik
- Pembangunan kekuatan yang pantas
- Tidak mengkakis
- Tidak toksik
- Bebas besi dan klorida
- Pampasan pengecutan
- Ciri-ciri pengepaman yang baik

Warna

- Kelabu

Pembungkusan

- 25 kg / beg

用途

适用于维修混凝土结构:

- 设备基础、基座
- 预制装配式柱的施工
- 锚杆在混凝土中的固定
- 桥梁承台支座
- 空洞
- 裂缝
- 凹洼处

特性

- 容易混合使用
- 一致的流动性
- 快速强化
- 非腐蚀性
- 无毒
- 无铁无氯
- 收缩补偿
- 良好的泵送性

颜色

- 灰色

包装

- 25 公斤 / 袋



SikaGrout® - 214 MY

Multi-purpose dual shrinkage compensated cementitious grout.
水泥基无收缩自流平灌浆材料

Uses

Suitable for the following grouting works with clearance of 10 mm or more:

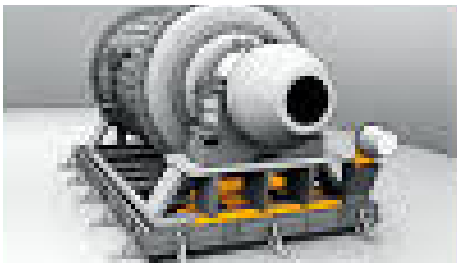
- Machine foundations
- Columns in precast constructions
- Concrete anchors
- Bridge bearings
- Cavities
- Gaps
- Recesses
- Rail beds

Colour

- Grey premixed powder

Size:

- 25 kg



Characteristics & Advantages

- Economical and easy to use material (only requiring the simple addition of water.)
- Easy to mix and apply
- Good flow characteristics
- Rapid strength development
- High ultimate strength
- Impact resistant
- Non-corrosive & Non-toxic
- Iron and chloride free
- Dense and non-shrink (2-step expansion)
- Extended working time

Sika Grout214为无收缩、自流平、高性能的预拌型水泥基灌浆材料。可操作时间长，适合在不同环境温度下使用。



Sika Plastiment® SD-2

Plasticiser for semi-dry concrete
水泥基无收缩自流平灌浆材料

Uses

Formulated for the semi-dry process of manufacturing screen blocks and re-constructed stone where the matrix is based on very fine graded aggregates.

Colour

- Grey premixed powder

Size:

- 25 kg

Characteristics & Advantages

- Economical and easy to use material (only requiring the simple addition of water.)
- Easy to mix and apply
- Good flow characteristics
- Rapid strength development
- High ultimate strength
- Impact resistant
- Non-corrosive & Non-toxic
- Iron and chloride free
- Dense and non-shrink (2-step expansion)
- Extended working time

*Sika Grout214*为无收缩、自流平、高性能的预拌型水泥基灌浆材料。可操作时间长，适合在不同环境温度下使用。



Sika® Reemat Premium-120

Glass Fiber Mat (GFM) Reinforcement System 玻璃纤维垫子

Uses

Used as reinforcement with the liquid applied waterproofing membrane. The randomly oriented fibers within the mats give maximum multi-directional tensile strength to the membranes while allowing them to remain highly elastomeric.

Waterproofing reinforcement on flat roofs, balconies, terraces and etc.

- For roof with many details and complex geometry.
- For total or partial waterproofing reinforcement
- For general detailing works and other general waterproofing works in both new construction and refurbishment project
- Repair of old waterproofing membranes

Colour

- *White*

Size:

- 120g roll [200m (L) x 1.38m (W)]

Characteristics & Advantages

- Tested for use with *Sikalastic®* systems liquid applied waterproofing membranes.
- Quick application and easily molded around flashing, protrusions, joints, corners and other surface detail.
- Increase tensile strength to the waterproofing membranes.
- Ensures the correct thickness of the waterproofing layer.
- Ensures the crack bridging properties of the waterproofing layer.
- Adapts to all different shapes and profiles on the substrate surface.



Sikaflex®- Construction (AP)

Elastic polyurethane sealant for construction joint
接缝密封胶

Uses

Suitable for sealing joints in building construction such as:

- Balcony parapets
- Connection joints (around windows and doors, facades, metal claddings, concrete elements), as well as joints in wood and metal structures.

Colour

- *White, Concrete Grey, Black, Brown*

Size:

- 600ml (Sausage)

Characteristics & Advantages

For highest sealing requirements:

- Movement capability 25%
- Good adhesion to many substrates
- Bubble-free curing
- Very short cut-off string
- Tackfree surface
- High tear strength



Sikasil®-119 MP

Multipurpose neutral silicone sealant
多用途硅密封胶

Uses

A one-component, non-corrosive sealant for indoor and outdoor applications ; designed for weatherproof joints between various substrates such as glass, metals, painted surfaces, wood aluminum, ceramic tile, PVC and concrete.

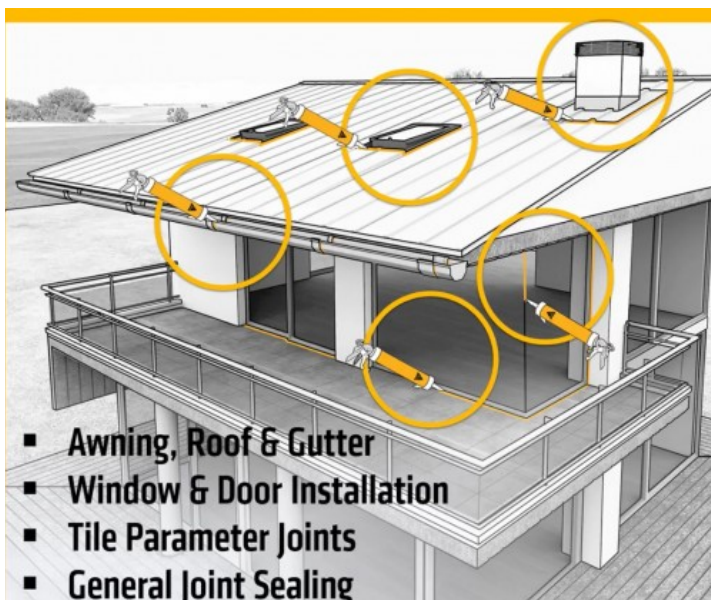
- Awning, roof and gutter
- Window and door installation
- Tile parameter joints
- General joint sealing

Colour

- *Transparent, White, Grey, Black*

Size:

- 270 ml (Cartridge)



Characteristics & Advantages

- Very good UV and weathering resistance.
- Primeless adhesion to a wide range of substrates.
- High elasticity and flexibility.
- Low odor, neutral curing.
- Non-corrosive.



Sikasil®-129 Kitchen & Bathroom

Silicone sealant for kitchen and bathroom
厨房及厕所硅密封胶

Uses

Silicone sealant with resistance to fungus.
Suitable for hot and tropical climate conditions.

Sikasil®-129 Kitchen & Bathroom is designed for sanitary and other sealing applications that require mildew resistance

- Wet areas.
- Internal and external.
- Multi substrate: metal (not including copper), glass, stone, aluminum, and plastic.

Colour

- *Transparent, White*

Size:

- 270 ml (Cartridge)

Characteristics & Advantages

- Very good UV and weathering resistance.
- Primeless adhesion to a wide range of substrates.
- High elasticity and flexibility.
- Low odor, neutral curing.
- Non-corrosive.



SikaCeram®-88 MY

Cementitious Tile Adhesive

A product used for bonding ceramic tiles in continuous thin layers.

瓷砖粘结剂

Uses

Used for bonding ceramic tiles in continuous thin layers.

Characteristics & Advantages

- Easy to use with excellent workability and thixo-tropic consistency.
- Very good adhesion to most common substrates (concrete, cementitious mortar, stone, bricks, etc.)
- Can be used with SikaLatex®SP to increase performance of the adhesive.

Colour

- Grey

Packaging

- 25 kg / bag

Kegunaan

Digunakan untuk mengikat jubin seramik dalam lapisan nipis.

Ciri-ciri & Kelebihan

- Mudah untuk digunakan dengan keboleherjaan yang baik.
- Lekatan yang amat baik pada kebanyakan substrat biasa (konkrit, mortar, batu, batu bata, & sebagainya.)
- Sesuai digunakan bersama SikaLatex®SP untuk meningkatkan prestasi pelekat itu.

Warna

- Kelabu

Pembungkusan

- 25 kg / beg

用途

适用于薄层施工粘结瓷砖。

特性

- 应用简单，优异的可操作性。
- 对于常见基材有良好的粘着力如混凝土、水泥砂浆、石头、砖块等等。
- 可与SikaLatex®SP一起使用以强化粘结剂的性能。

颜色

- 灰色

包装

- 25 公斤 / 袋



SikaCeram®-188 MY

High performance cementitious tile adhesive

A product used for bonding ceramic tiles in continuous thin layers, up to 10 mm thick.

瓷砖粘结剂

Uses

Due to its excellent adhesion, it can be used when traditional tile adhesives for bonding tiles are not suitable due to the type of tile, the substrate or the specific job situation / location.

Characteristics & Advantages

- Easy to use with excellent workability and thixo-tropic consistency.
- Can be applied on **vertical surfaces** without sagging or tiles slipping, even when heavy tiles are used.
- Very good adhesion to most common substrates (concrete, cementitious mortar, stone, bricks, etc.)
- Tile on tile of existing flooring with tile refurbishment system
- Compatible with Sikalastic®-1 KMY, SikaTop® Seal107 & 109 MY

Colour

- Grey Powder

Packaging

- 25 kg / bag

Kegunaan

Digunakan untuk mengikat jubin seramik dalam lapisan nipis yang berterusan, sehingga tebal 10mm. Boleh digunakan semasa pelekat jubin tradisional tidak sesuai untuk digunakan.

Ciri-ciri & Kelebihan

- Kebolehkerjaan yang sangat baik dan konsistensi thixo-tropic yang tinggi.
- Boleh diterapkan pada **permukaan menegak** tanpa jubin melendut atau tergelincir dari kedudukannya walaupun jubin berat digunakan.
- Lekatan yang sangat baik kepada substrat yang paling biasa (konkrit, mortar, batu, batu bata, & sebagainya.)
- Lekatan yang sangat baik untuk jubin sedia ada.
- Sesuai digunakan bersama Sikalastic®-1 KMY, SikaTop® Seal107 & 109 MY

Warna

- Serbuk Kelabu

Pembungkusan

- 25 kg / beg

用途

适用于薄层施工粘结瓷砖，直达10毫米的厚度。适用于传统瓷砖粘结剂无法粘结的瓷砖 (基于瓷砖种类，粘结表面或施工地点。

特性

- 应用简单，优异的可操作性和触变稳定性。
- 可应用于垂直表面，不流挂或瓷砖不滑落，重型瓷砖也能使用。
- 对于常见基材有良好的粘着力如混凝土、水泥砂浆、石头、砖块等等。
- 对原有的瓷砖具有极佳的粘接力。
- 可直接施工于原有的地砖。
- 可与Sikalastic®-1 KMY, SikaTop® Seal107 & 109 MY一同使用。

颜色

- 灰色粉末

包装

- 25 公斤 / 包



SikaCeram®-288 MY

High performance, flexible cementitious tile adhesive

A product used for bonding ceramic tiles in continuous thin layers, up to 10 mm thick.

柔韧瓷砖粘结剂

Uses

Due to its excellent adhesion, it can be used in situations where traditional tile adhesives for bonding tiles are not suitable due to the type of tile, the substrate or the specific job situation / location.

Suitable to bond the following types of tile:

- Ceramic, porcelain, homogeneous tiles
- All type of low and high absorption tiles

适合粘结:

- 陶瓷, 瓷器以及同质瓷砖
- 各种不同吸收力 (高/低) 的瓷砖

Can be used on substrates including:

- Concrete and mortar
- Bricks
- Tiled surfaces (walls and floors)
- Large size tiles
- Under floor heating
- Interior painted walls - if the paint coating is completely bonded and sound
- Drywall / Precast wall Panel, etc

**Can be used on walls and floors, internally or externally.

Characteristics & Advantages

- SikaCeram-288 can be applied on a vertical surface without sagging or tiles slipping, even when heavy tiles are used.
- Very good adhesion to most common substrates (concrete, cementitious mortar, stone, bricks, etc.)
- Tile on tile of existing flooring with tile refurbishment system
- Compatible with Sikalastic®-1 KMY, SikaTop® Seal107 & SikaTop® Seal-109 MY

特性:

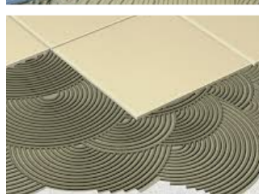
- 应用简单, 优异的可操作性和触变稳定性。
- 可应用于垂直表面, 不流挂或瓷砖不滑移, 重型瓷砖也能使用。
- 对于常见基材有良好的粘着力如混凝土、水泥砂浆、石头、砖块等等。
- 对原有的瓷砖具有极佳的粘着力。
- 可直接施工与原有的地砖。
- 可与Sikalastic®-1 KMY, SikaTop® Seal107 & 109 MY 一同使用。

Colour

- Grey powder

Size:

- 25 kg / bag



SikaWall®-160 Plaster

High performance, cementitious render

Lepaan bersimen berprestasi tinggi

高性能水泥基抹灰

Uses

Cementitious mortar for leveling brickwalls before skim coating. It is suitable for internal and external applications.

Characteristics & Advantages

- Good adhesion on substrate.
- Easy to apply.
- Non-cracking when applied at correct thickness and properly cured.

Colour

- Grey

Packaging

- 25 kg / bag

Kegunaan

Mortar bersimen untuk meratakan dinding bata sebelum pelapisan skim. Ia sesuai untuk aplikasi dalaman dan luaran.

Ciri-ciri & Kelebihan

- Lekatan yang baik pada substrat.
- Mudah untuk digunakan.
- Tidak-merekah apabila digunakan pada ketebalan yang betul dan kering dengan betul.

Warna

- Kelabu

Pembungkusan

- 25 kg / beg

用途

用于平整砖墙。适用于是你与室外的墙面。

特性

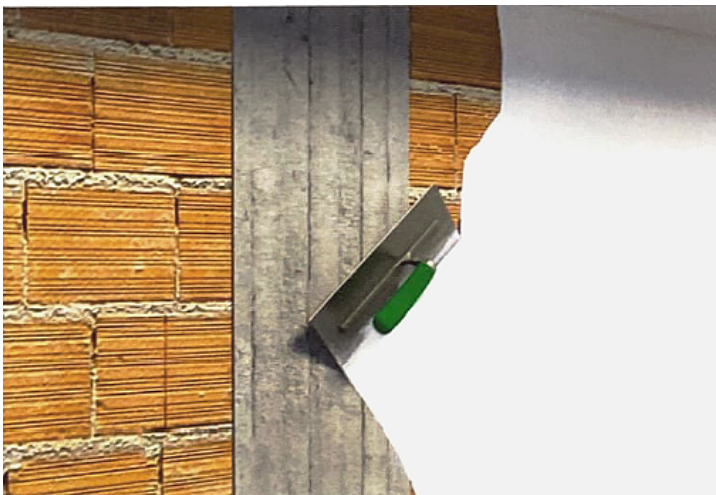
- 良好的基面粘着力。
- 容易使用。
- 准确的施工厚度与固化后不产生裂痕。

颜色

- 灰色

包装

- 25 公斤 / 包



SikaWall®-168 Plaster

High performance, cementitious render

Lepaan bersimen berprestasi tinggi

高性能水泥基抹灰

Uses

Cementitious mortar for leveling shear / concrete walls and light weight block walls. It is suitable for internal and external applications.

Characteristics & Advantages

- Excellent bond strength.
- Minimizes shrinkage cracking.
- Consistent quality.
- Easy to apply.
- Weather resistant and durable.

Colour

- Grey

Packaging

- 25 kg / bag

Kegunaan

Mortar bersimen untuk meratakan lapisan / dinding konkrit dan dinding bata konkrit ringan. Ia sesuai untuk aplikasi dalaman dan luaran.

Ciri-ciri & Kelebihan

- Kekuatan ikatan yang bagus.
- Meminumkan rekahan pengecutan.
- Kualiti yang konsisten.
- Mudah untuk digunakan.
- Rintangan terhadap cuaca dan tahan lama.

Warna

- Kelabu

Pembungkusan

- 25 kg / beg

用途

用于平整砖墙。适用于室内与室外的墙面。

特性

- 优异的粘着力。
- 极低的收缩率减少裂痕。
- 质量一致。
- 容易使用。
- 耐候和耐久性。

颜色

- 灰色

包装

- 25 公斤 / 包



SikaWall®-190 Course

High performance, cementitious skimcoat for internal and external wall
Lapisan skim bersimen berprestasi tinggi untuk dinding dalaman dan luaran.

室内外墙面用的高性能水泥基薄涂层

Uses

Cement mortar for filling and leveling coat for concrete surfaces and rendered walls, especially external wall.

Characteristics & Advantages

- Good adhesion.
- Greater durability and flexibility.
- Easy to apply.
- Thickness of the plaster can varied to minimize wastage.
- Non-combustible.
- Non-cracking when applied at correct thickness and properly cured.

Colour

- Grey

Packaging

- 25 kg / bag

Kegunaan

Mortar simen untuk pengisian dan perataan lapisan untuk permukaan konkrit dan dinding berlepa, terutamanya dinding luaran.

Ciri-ciri & Kelebihan

- Lekatan yang baik.
- Ketahanan dan fleksibiliti yang lebih hebat.
- Mudah untuk digunakan.
- Ketebalan plaster boleh diubah untuk meminimumkan pembaziran.
- Tidal terbakar.
- Tidal merekah apabila digunakan pada ketebalan yang betul dan kering dengan baik

Warna

- Kelabu

Pembungkusan

- 25 kg / beg

用途

适用于补填和平整水泥墙面和抹灰墙，尤其是外墙。

特性

- 良好的粘着力。
- 更好的耐久性及伸缩性。
- 容易使用。
- 可调整泥沙厚度以减少浪费。
- 不易燃。
- 准确的施工厚度及适当的固化后不产生裂痕。

颜色

- 灰色

包装

- 25 公斤 / 袋



SikaWall®-191 Base

High performance, cementitious base coat

Lapisan asas bersimen berprestasi tinggi

高性能水泥基底涂

Uses

Cementitious mortar for plastered leveling compound for rougher plaster surfaces. It is suitable for internal application.

Characteristics & Advantages

- Suitable for large applications.
- Fast drying.
- Easy to apply.
- Good adhesion
- Greater durability and flexibility..

Colour

- White
- Grey

Packaging

- 25 kg / bag

Kegunaan

Mortar bersimen untuk kompaun merata berplaster untuk permukaan plaster yang lebih kasar. Ia sesuai untuk aplikasi dalaman.

Ciri-ciri & Kelebihan

- Sesuai untuk aplikasi berskala besar.
- Cepat kering.
- Mudah untuk digunakan.
- Lekatan yang baik.
- Ketahanan dan fleksibiliti yang lebih hebat.

Warna

- Putih
- Kelabu

Pembungkusan

- 25 kg / beg

用途

平整抹灰墙面。适用于室内的墙面。

特性

- 适用于大范围施工。
- 快干。
- 容易使用。
- 良好的粘着力。
- 更好的耐久性 & 伸缩性。

颜色

- 白色
- 灰色

包装

- 25 公斤 / 袋



SikaWall®-192 Finish

High performance, cementitious finish skimcoat

Kemasan lapisan skim bersimen berprestasi tinggi

高性能水泥基面漆

Uses

Cementitious mortar paste for smoothing and finishing. It is suitable for internal application.

Characteristics & Advantages

- Good adhesion on gypsum walls.
- Fast setting.
- Can be overpainted after 3 hours.
- Good workability.
- Easy to finish and smooth.
- Thin layer finishing.
- Fast finishing.

Colour

- White
- Grey

Packaging

- 25 kg / bag

Kegunaan

Pes mortar bersimen untuk pelicinan dan pengemasan akhir. Ia sesuai untuk aplikasi dalaman.

Ciri-ciri & Kelebihan

- Lekatan yang baik pada dinding gypsum.
- Cepat bentuk.
- Boleh dicat atasnya selepas 3 jam.
- Kebolehterkerjaan yang baik.
- Mudah untuk disiapkan dan licin.
- Kemasan akhir berlapis nipis.
- Kemasan akhir yang cepat.

Warna

- Putih
- Kelabu

Pembungkusan

- 25 kg / beg

用途

平滑和光滑墙面。适用于室内的墙面。

特性

- 良好的石膏墙面粘着力。
- 快干。
- 三个小时后可上漆。
- 良好的施工性能。
- 容易抚平。
- 薄层处理。
- 快速处理。

颜色

- 白色
- 灰色

包装

- 25 公斤 / 袋



SikaWall®-198 Finish 2-in-1

High performance, cementitious finish skimcoat

Kemasan lapisan skim bersimen berprestasi tinggi

高性能水泥基面漆

Uses

Cementitious fine finishing coat specially formulated for leveling the plastered surfaces and finishing. It is suitable for internal and external applications.

Characteristics & Advantages

- Excellent bond strength.
- Easy to apply.
- Consistent quality.
- Minimize shrinkage cracking.
- Weather resistant and durable.

Colour

- Grey

Packaging

- 25 kg / bag

Kegunaan

Lapisan pengemas halus bersimen yang diformulasi khas untuk meratakan permukaan berplaster dan kemasan akhir. Ia sesuai untuk aplikasi dalaman dan luar.

Ciri-ciri & Kelebihan

- Kekuatan ikatan yang bagus.
- Mudah digunakan.
- Kualiti yang konsisten.
- Meminimumkan rekahan pengecutan.
- Rintangan terhadap cuaca dan tahan lama.

Warna

- Kelabu

Pembungkusan

- 25 kg / beg

用途

专门配置用于平整和平滑抹灰墙面的细沙浆。适用于室内与室外的墙面。

特性

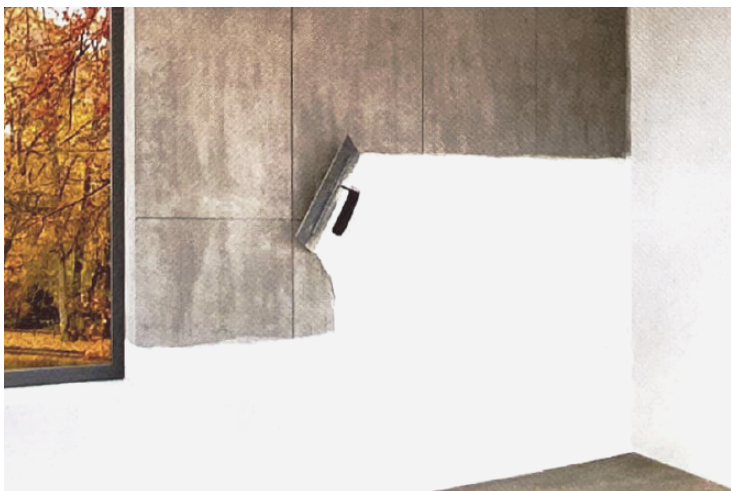
- 优异的粘着力。
- 容易使用。
- 质量一致。
- 减少因收缩产生的裂缝。
- 耐候耐久。

颜色

- 灰色

包装

- 25 公斤 / 袋



Sika Rugasol® G

Concrete Surface Retarder 混凝土表面缓凝剂

Uses

An economical surface retarder for concrete or mortar which is to be overlaid or abutted with a plaster, epoxy screed / another layer of concrete. After the concrete or mortar has cured, its surface is washed off and the aggregates will be exposed. This eliminates the need for sand blasting or scabbling. It is also used to achieve a decorative exposed aggregate finish.

使用方便且经济，施用在新浇混凝土水平面上，形成接缝，抹灰和砂浆施工所需的机械性咬合连接，代替喷砂、凿等方法，外露骨料完好，埋嵌紧密。

- Construction joint stopends
- Decorative finish for floor slabs, driveways, patios, swimming pool decks, footpaths, etc.

Sika Rugasol® G 为液状表面缓凝剂，用于建筑物水平接头和表面。该产品使用方便，性价比高。可用于混凝土表面骨料外露处理，及建筑物接头，末端的处理或连续施工时的处理。

Characteristics & Advantages

- Easy application by brush or spray.
- One time application only.
- Expensive scabbling is eliminated.
- Labour cost is reduced.
- Good mechanical key is provided.
- Consistent architectural decorative finish is achieved.

Colour

Light yellowish gel

Size:

- 20L



Sikafloor® -3 QuartzTop

Coloured mineral dry shake floor hardener

Serbuk mineral pengeras lantai kering berwarna

彩色干撒式地面硬化剂

Uses

- For surface hardening of floor slabs and screeds (to resist abrasion and reduce dusting)
- For floors subjected to severe mechanical wear, for example warehouses, quays, parking lots, service stations and factories.

Characteristics & Advantages

- Intrinsic colouring.
- High resistance to abrasion.
- Reduce dusting.
- High resistance to impact.
- Improve resistance to oil and grease.
- Eliminating need for granolithic screed.

Colour

- *Natural*
- *Terracotta*
- *Dark Green*
- *Grey*

Packaging

- 25 kg / bag

Kegunaan

- Untuk permukaan pengerasan papak lantai dan skop (untuk merintang lelasan dan mengurangkan debu).
- Untuk lantai yang dikenakan impak mekanikal yang kuat, contohnya gudang, dermaga, lot parkir, stesen servis dan kilang.

Ciri-ciri & Kelebihan

- Pewarnaan intrinsik.
- Rintangan tinggi terhadap lelasan.
- Mengurangkan debu.
- Rintangan tinggi terhadap impak.
- Meningkatkan ketahanan terhadap minyak dan gris.
- Menghapuskan keperluan untuk senarai granolitik.

Warna

- *Semulajadi*
- *Terracotta*
- *Hijau Gelap*
- *Kelabu*

Pembungkusan

- 25 kg / beg

用途

- 使地面硬化，具耐磨性并减少起尘。
- 适用于需承受机械载荷的地面，如仓库，码头，停车场，服务站与工厂。

特性

- 内着色。
- 高耐磨力。
- 减少起尘。
- 高抗冲击力。
- 提高抗油脂性能。
- 无需稀释混凝土尘。

颜色

- 水泥色
- 赤陶色
- 深绿
- 灰色

包装

- 25 公斤 / 袋



Sikacrete® Floor Level

High performance cementitious, self leveling, underlayment

Lapisan antara subfloor dan lantai siap bersimen berprestasi tinggi dan merata-diri

高性能水泥基自流平地板垫层

Uses

For surface leveling of new floor or floor renovation, at high rise building, exhibition hall, auditorium, mall, residential, etc.

Characteristics & Advantages

- Fast application, good flow and cohesion.
- Very good bond and high mechanical strengths.
- Very good surface appearance and hardness.

Colour

- Light Grey

Packaging

- 25 kg / bag

Kegunaan

Untuk meratakan permukaan lantai baru atau pengubahsuaian lantai, di bangunan bertingkat tinggi, dewan pameran, auditorium, pusat membeli-belah, kediaman, dll.

Ciri-ciri & Kelebihan

- Aplikasi yang cepat, aliran dan penyatuan yang baik.
- Ikatan yang sangat baik dan kekuatan mekanikal yang tinggi.
- Penampilan dan kekerasan permukaan yang sangat baik.

Warna

- Kelabu Cerah

Pembungkusan

- 25 kg / beg

用途

找平新地面或地面翻新，适用于高层建筑，展厅，礼堂，购物广场，住宅等等。

特性

- 施工快，有良好的流动性与凝集力。
- 良好的粘性与强度。
- 完美的表现与硬度。

颜色

- 浅灰色

包装

- 25 公斤 / 袋

